

# DUPLEX UNIT

## 2/F



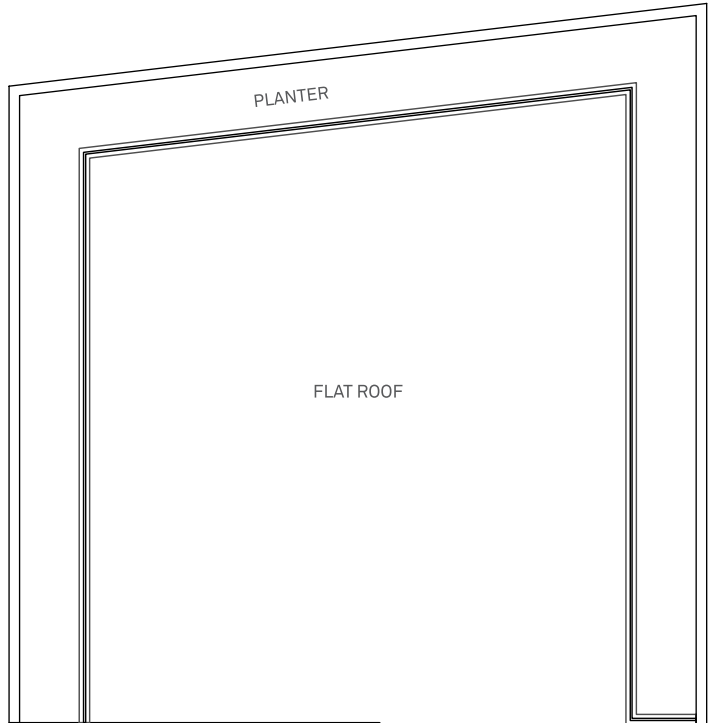
### AREA SCHEDULE

Floor	Saleable Area   square feet
Flat South, 2/F-3/F	789sf with 653sf flat roof (Including Balcony: 18sf, Utility Platform: 17sf)

### LOOSE FURNITURE LIST#

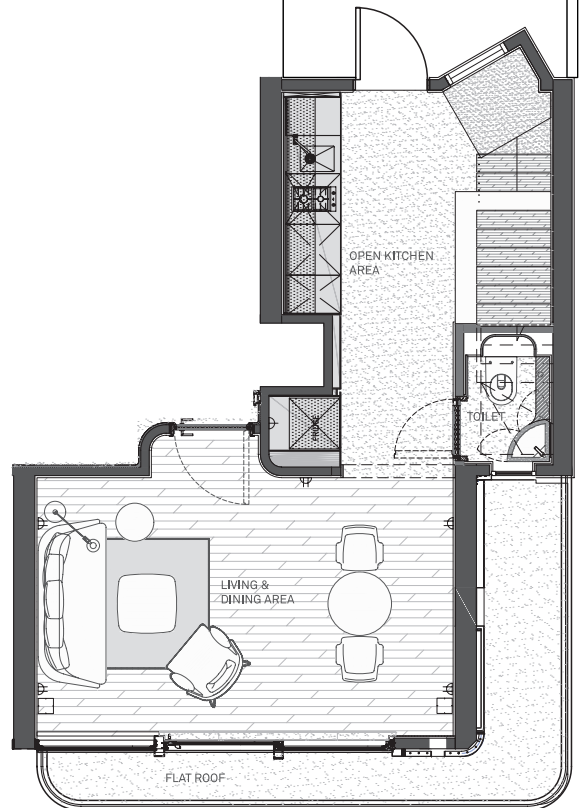
Living Area	Length (mm)	Wide (mm)
Sofa	1990	800
Round Coffee Table	450	450
Square Coffee Table	700	700
Carpet	1530	1530
Armchair	825	735
Table	750	750
Chair	555	540

# The furniture is included for reference only and will not be included in the relevant specified residential property upon completion. Please refer to the fittings, finishes and appliances section of the Sales Brochure for details.



### Remarks:

1. The floor to floor height of each residential property is: 2/F-3/F - 3.15m\*.
2. The thickness of floor slabs (excluding plaster) of each residential floor is: 2/F Flat North - 300mm; 2/F Flat South - 150mm and 300mm; 3/F Flat North & South - 300mm.
3. The internal areas of the residential properties on the upper floors will generally be slightly larger than those on the lower floors because of the reducing thickness of the structural walls on the upper floors.
4. The dimensions in the floor plans are all structural dimensions in millimeter.
5. This furniture layout plan is for reference only, and no furniture will be included in the relevant specified residential property upon completion.
6. The saleable area of the residential property and the floor area of balcony, utility platform and verandah (if any) are calculated in accordance with Section 8 of the Residential Properties (First-hand Sales) Ordinance; and the areas of the other specified items (not included in the saleable area) are calculated in accordance with Part 2 of Schedule 2 of the Residential Properties (First-hand Sales) Ordinance.



Facing PMQ ↓



\* Inclusive of the thickness of mass concrete fill on sunken slab

# DUPLEX UNIT

## 3/F



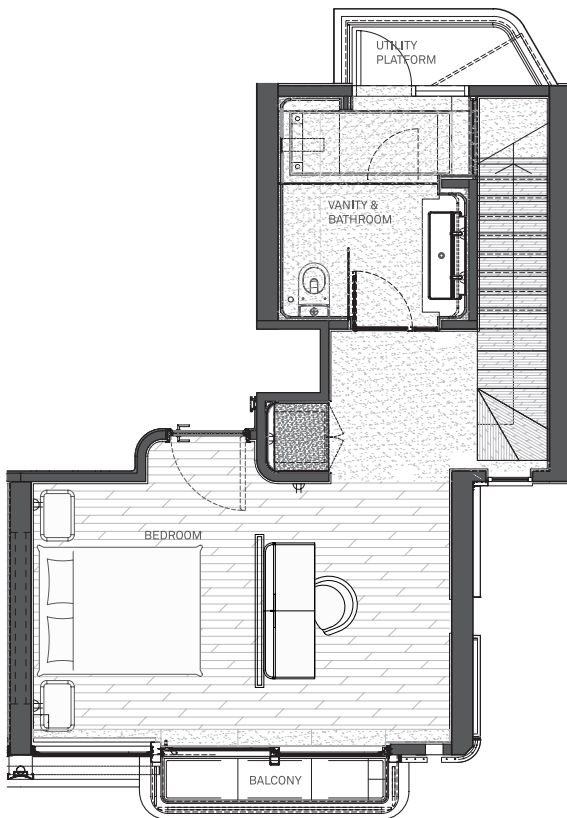
### AREA SCHEDULE

Floor	Saleable Area   square feet
Flat South, 2/F-3/F	<b>789sf with 653sf flat roof</b> (Including Balcony: 18sf, Utility Platform: 17sf)

### LOOSE FURNITURE LIST#

	Length (mm)	Wide (mm)
<b>Bedroom</b>		
Bed	1950	1570
Bedside Cabinet	600	400
Table	1600	600
Chair	670	560

# The furniture is included for reference only and will not be included in the relevant specified residential property upon completion. Please refer to the fittings, finishes and appliances section of the Sales Brochure for details.



Facing  
PMQ ↓



### Remarks:

1. The floor to floor height of each residential property is: 2/F-3/F - 3.15m\*.
2. The thickness of floor slabs (excluding plaster) of each residential floor is: 2/F Flat North - 300mm; 2/F Flat South - 150mm and 300mm; 3/F Flat North & South - 300mm.
3. The internal areas of the residential properties on the upper floors will generally be slightly larger than those on the lower floors because of the reducing thickness of the structural walls on the upper floors.
4. The dimensions in the floor plans are all structural dimensions in millimeter.
5. This furniture layout plan is for reference only, and no furniture will be included in the relevant specified residential property upon completion.
6. The saleable area of the residential property and the floor area of balcony, utility platform and verandah (if any) are calculated in accordance with Section 8 of the Residential Properties (First-hand Sales) Ordinance; and the areas of the other specified items (not included in the saleable area) are calculated in accordance with Part 2 of Schedule 2 of the Residential Properties (First-hand Sales) Ordinance.

\* Inclusive of the thickness of mass concrete fill on sunken slab