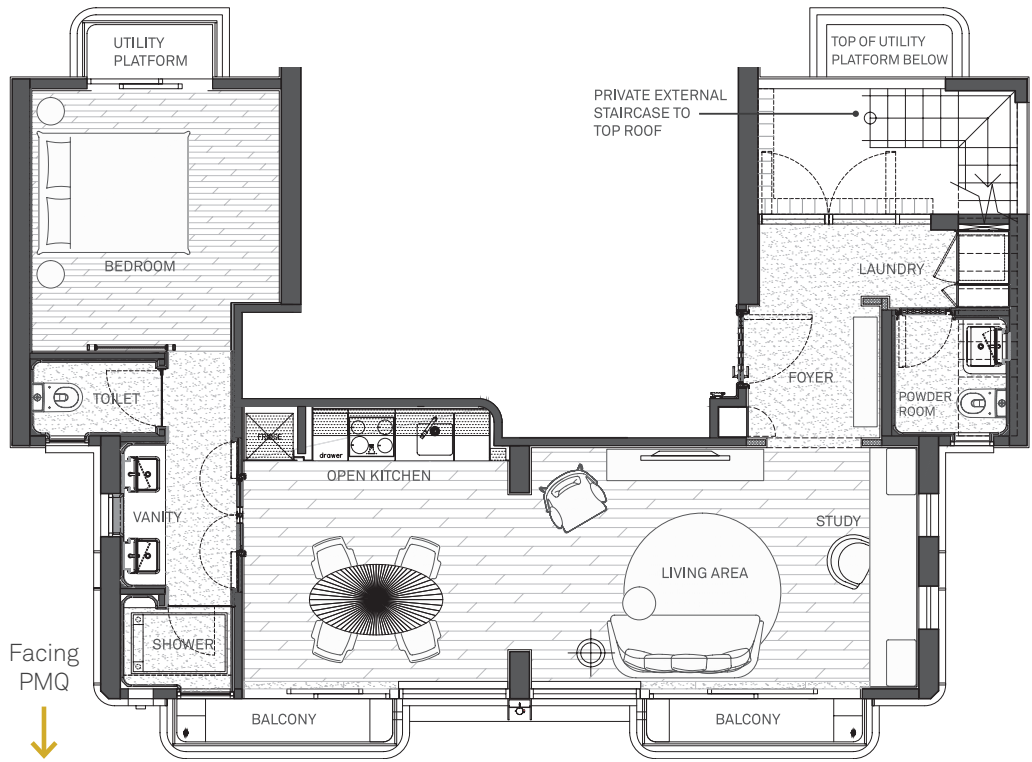


25/F PENTHOUSE



AREA SCHEDULE

Floor **Saleable Area | square feet**
25/F* **763sf with 33sf flat roof on 25/F and 510sf flat roof on Roof Floor**
 (Including Balcony: 37sf, Utility Platform: 14sf)

*4/F, 14/F and 24/F are omitted.

LOOSE FURNITURE LIST#

	Length (mm)	Wide (mm)
Dining Area		
Dining Table	1700	900
Dining Chair	555	540
Living Area		
Sofa	1990	800
Coffee Table	420	420
Round Carpet	2000	2000
TV Cabinet	2000	400
Armchair	740	660
Table	3050	600
Chair	670	560
Foyer		
Cabinet	1400	300
Cabinet	400	385
Laundry		
Cabinet	985	675
Bedroom		
Bed	1950	1570
Bedside Cabinet	350	350

The furniture is included for reference only and will not be included in the relevant specified residential property upon completion. Please refer to the fittings, finishes and appliances section of the Sales Brochure for details.

Remarks:

1. The floor to floor height of each residential property is: 25/F - 3.15m*.
2. The thickness of floor slabs (excluding plaster) of each residential floor is: 25/F Penthouse - 150mm and 300mm.
3. The internal areas of the residential properties on the upper floors will generally be slightly larger than those on the lower floors because of the reducing thickness of the structural walls on the upper floors.
4. The dimensions in the floor plans are all structural dimensions in millimeter.
5. This furniture layout plan is for reference only, and no furniture will be included in the relevant specified residential property upon completion.
6. The saleable area of the residential property and the floor area of balcony, utility platform and verandah (if any) are calculated in accordance with Section 8 of the Residential Properties (First-hand Sales) Ordinance; and the areas of the other specified items (not included in the saleable area) are calculated in accordance with Part 2 of Schedule 2 of the Residential Properties (First-hand Sales) Ordinance.

* Inclusive of the thickness of mass concrete fill on sunken slab